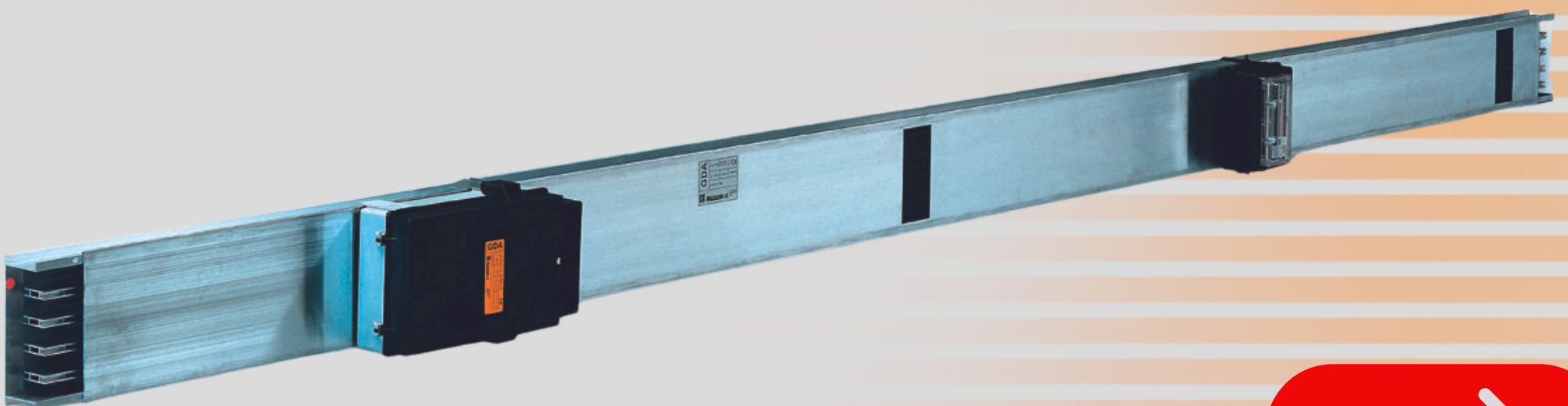


Busbar Trunking

What are the different types of busbar trunking?



Busbar trunking systems... criteria to distinguish them

Busbars are practical and flexible solutions for energy distribution in different types of buildings.

They offer safety, speed of installation and the possibility of managing different loads

Lets see the different types...



Lighting Busbar

Busbar trunking for lighting

Perfect for powering lighting and small loads, such as warehouses, car parks or exhibition halls

From our range: **GLS**
Rated current: **25-63A**



Small Power

Busbar trunking for small industrial loads

Do you need to power single-phase or three-phase loads? This modular busbar system is the perfect solution! Ideal for industrial and commercial settings

From our range: **J-Series**
Rated current: **63-160A**



Medium Power

Busbar trunking for high load

For industrial and tertiary buildings.
Thanks to riser columns, they are used for distribution on floors, in factories, in hospitals and skyscrapers

From our range: **GDA**

Rated Current: **63 - 2500 A.**



High Power

With energy distribution and transport function

Ideal for electrical distribution in
industrial and tertiary buildings,
where there is a high load density

Lets analyze them in more detail



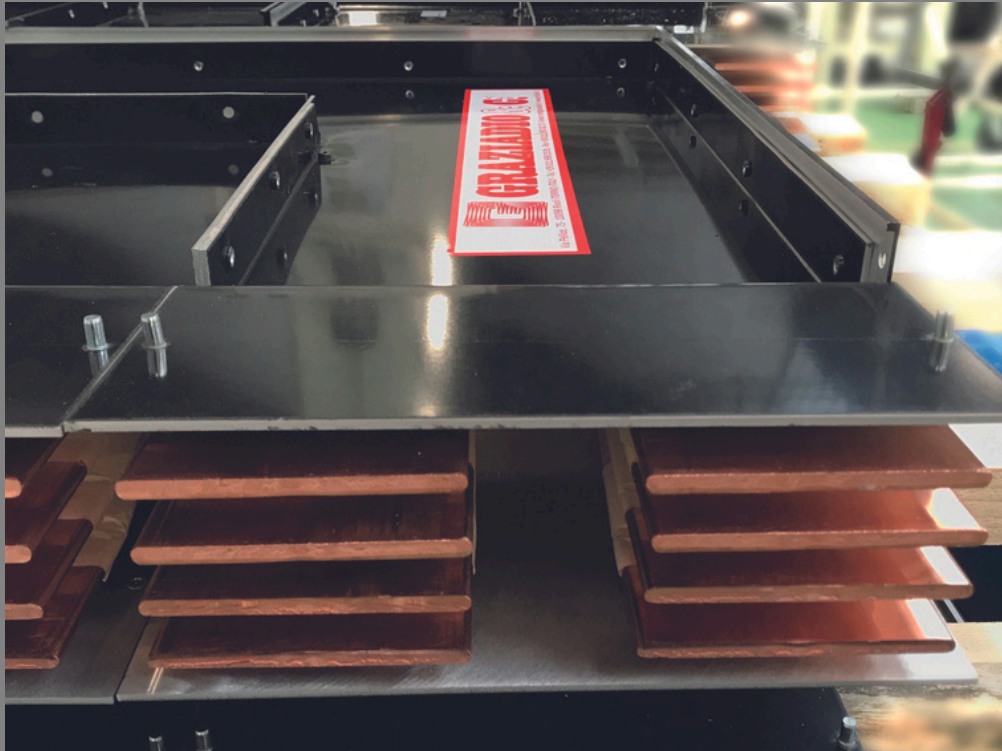
Based on the type of installation (external or internal) the necessary protection and the aggressiveness of the environments, the busbar can be:

COMPACT: Called "sandwich" with insulated conductors, reduces electromagnetic emissions and voltage drop. Can be installed in any position, without loss of efficiency!

ISOLSBARRA: and you need high protection (IP66-IP68) it is ideal for particularly harsh environments. Resistant to: tropical climate, explosive environment, fire, UV rays...



From our range: **K-Series (Compact)**



Rated current:
800 - 5000 A

From our range: **ISOLSBARRA**



Rated current
630 - 6300 A

For further information
on the ranges mentioned
**Please contact us or
visit our website.**

